

CITIZEN PARTICIPATION PLAN

FOR THE

FORMER DANGMAN PARK MANUFACTURED GAS PLANT SITE

**Neptune Avenue and West 5th Street
Brooklyn (Kings County), NY 11224**

Prepared by

National Grid

July 2017

TABLE OF CONTENTS

<u>Section</u>	<u>Title</u>	<u>Page</u>
1.0	INTRODUCTION	1
2.0	BASIC SITE INFORMATION	2
3.0	REMEDIAL PROGRAM OVERVIEW	4
3.1	New York State Remedial Program Overview	4
3.2	Project Area Investigation History	4
4.0	CITIZEN PARTICIPATION ACTIVITIES	7
4.1	Goals and Objectives	7
4.2	Tools and Methods	11
4.2.1	Document Repository	11
4.2.2	Public Meetings and Fact Sheets	12
4.2.3	Information Newsletters/Handouts	12
4.2.4	Telephone Hotline	12
4.2.5	Website	13
4.3	Roles and Responsibilities	13
4.4	Schedule for Implementing Elements of the CPP	13
5.0	SUMMARY.....	14

List of Figures

1	Site Location Map	3
---	-------------------------	---

List of Appendices

Glossary of Key Citizen Participation Terms and Major Program Elements	A
Identification of Document Repositories	B
Identification of Affected and/or Interested Parties	C
Identification of Project Management Contacts	D

1.0 INTRODUCTION

Citizen participation is an integral component of remedial programs in New York State. Input from affected or interested individuals and organizations on the remedial program helps ensure outcomes that account for both technical and human concerns for protecting public health and the environment. A project-specific plan is needed to inform and involve community residents, public and private leaders, and other stakeholders. This Citizen Participation Plan (CPP) documents the planned project-specific public outreach activities and resources organized for the remedial program associated with the former Dangman Park Site (Site), a former Manufactured Gas Plant (MGP) Site.

The primary purpose of this CPP is to outline a variety of communication methods that, based on applicable New York State law and New York State Department of Environmental Conservation (NYSDEC) regulations and guidance, provide for constructive communication of program activities between the stakeholders and other interested parties. This CPP includes methods intended to inform interested parties of program developments, elicit responses and public involvement, and provide a central point of contact for inquiries regarding the remedial program for the Site. Given this context, this CPP presents the planned communication and outreach activities, describes how interested individuals and groups can participate in the remedial program, and provides a variety of reference materials to facilitate gaining access to project-specific information and management personnel.

Both the NYSDEC and National Grid are committed to the implementation of this CPP as required by Environmental Conservation Law 27-1417 and Title 6 of the New York Codes, Rules and Regulations (NYCRR) Part 375, applicable NYSDEC guidance (e.g., DER-23/Citizen Participation Handbook for Remedial Programs (January 2010) and the Order on Consent (Index #A2-0552-0606). As required by 6 NYCRR Part 375-1.10 and 375-3.10, NYSDEC and National Grid will review and update this CPP to account for significant changes in the remedial program.

2.0 BASIC SITE INFORMATION

The Dangman Park former Manufactured Gas Plant (MGP) Site (“Site”) is located at 486 Neptune Avenue in the Brooklyn, New York. The Site is located approximately 1,300 feet southeast of Coney Island Creek and approximately 2,400 feet north of New York Bay. The Site is located in the Coney Island neighborhood of Brooklyn on approximately 1 acre of land, and is contained within Lots 1 and 25 of Block 7273, which are bounded by Neptune Avenue to the north, W. 5th Street to the east, a residential parcel to the south and a commercial parcel to the west. The Site was developed with a shopping center and its parking areas, since the 1060’s, and is now under redevelopment. The site also includes a parking lot for an adjacent high-rise apartment building.

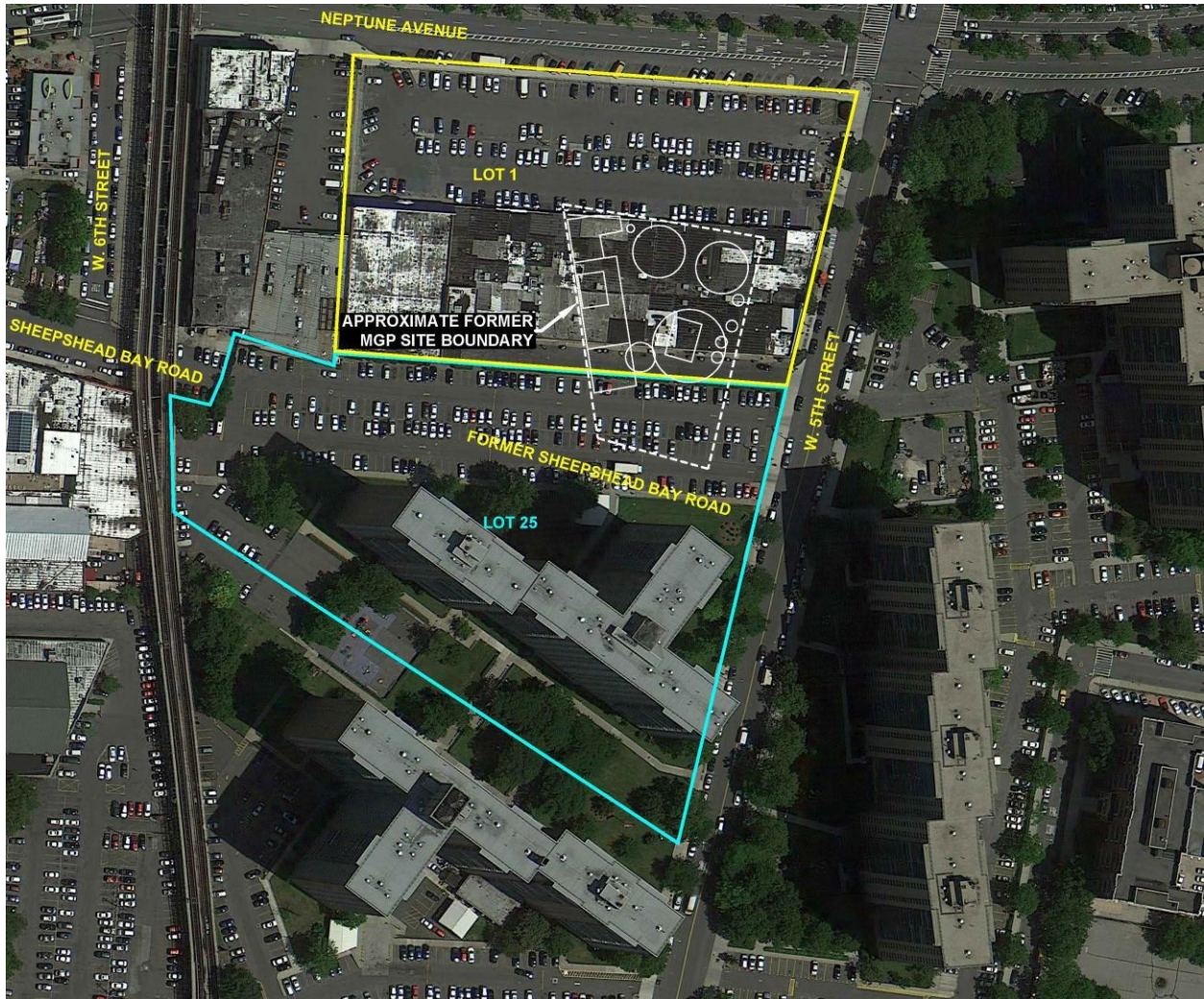
History and Operations

Gas used for cooking, lighting, heating and commercial purposes was manufactured at the Site. The Site was operated by the Brooklyn Borough Gas Company, which was a predecessor company to National Grid. The Brooklyn Borough Gas Company was acquired by the Brooklyn Union Gas Company (BUG), which ultimately became KeySpan Corporation (KeySpan). KeySpan became National Grid following a merger in 2008. Based on a review of available historical information, the Site was used as an MGP from prior to 1895 until sometime between 1906 and 1930. The 1895 Sanborn map shows two gas holders, a retort house, two oil tanks, a tar tank, an engine room, a purifying house and a shed. By 1906, the MGP Site was operated by the Brooklyn Borough Gas Company; an additional gas holder, generating house and cistern had been constructed, and the retort house and tar tank were no longer present. The MGP structures were removed sometime between 1906 and 1930. By 1930, the Site was occupied by a club house. By 1966, the Trump Village Shopping Center occupied the northern and central portions of the Site.

Current Site Description

As noted, the Site is developed with a shopping center and its parking areas as well as a parking lot for an adjacent high-rise apartment building.

Aerial Site Map of Dangman Park Former MGP Site



3.0 Remedial Program Overview

3.1 New York State Remedial Program Overview

National Grid, successor to KeySpan, conducted a Site Characterization at the Site in 2009 and 2010 and a Remedial Investigation between 2011 and 2013. National Grid also conducted a portion of an Interim Remedial Measure (IRM) to treat groundwater and less-contaminated soil.

The Site Characterization and Remedial Investigation were completed under the 2007 Multi-Site Administrative Order on Consent (ACO) #A2-0552-0606 between KeySpan (now National Grid) and the NYSDEC. The IRM began in 2017.

For more information on the remedial program and process in New York State, interested parties can contact any of the state representatives listed in Appendix D or visit the NYSDEC Website at: <http://www.dec.ny.gov/chemical/8430.html>.

3.2 Project Area Investigation History

National Grid conducted a Site Characterization in 2009 and 2010. The Site Characterization was conducted through analysis of samples taken from near-surface (2 to 3 feet below land surface) and deeper soils, groundwater, sub-slab soil vapor and indoor air. A Site Characterization Data Summary report was submitted to the NYSDEC in April 2010 and a Site Characterization Data Summary Addendum report was submitted to the NYSDEC in May 2010.

National Grid conducted a Remedial Investigation between 2011 and 2013. The Remedial Investigation was conducted through analysis of samples taken from near-surface (2 to 3 feet below land surface) and deeper soils, groundwater, and soil vapor. A Final Remedial Investigation Report dated July 2014 was submitted to the NYSDEC.

The Key Findings of the Site Characterization and Remedial Investigation are:

- The primary volatile organic compounds (VOCs) that were detected in soil include benzene, toluene, ethylbenzene, and xylenes (BTEX). The primary semi-volatile organic compounds (SVOCs) that were detected in soil include polycyclic aromatic hydrocarbons (PAHs). These compounds are frequently associated with former MGP operations. Cyanide, metals, polychlorinated biphenyls (PCBs), and pesticides were detected in soil but not identified as constituents of concern (COCs). These constituents may be present at the Site due to the post-MGP placement of fill material.
- The primary VOCs and SVOCs that were detected in groundwater include BTEX and

PAHs, respectively. Cyanide, metals, PCBs, and pesticides were not identified as COCs in groundwater. Neither light non-aqueous phase liquid (LNAPL) nor dense non-aqueous phase liquid (DNAPL) were detected in any of the monitoring wells.

- Potential MGP-related constituents were detected in two exterior soil vapor samples. No MGP-related compounds were detected in the other two soil vapor samples. Non-MGP-related constituents were detected in the four exterior soil vapor samples. Most notably, chlorinated VOCs (e.g., trichloroethene [TCE], cis-1,2-dichloroethene [cis-1,2-DCE], trans-1,2-dichloroethene [trans-1,2-DCE], vinyl chloride [VC], and tetrachloroethene [PCE]) were detected in two of the exterior soil vapor samples.
- PCE and other chlorinated VOCs (TCE, cis-1,2-DCE, and VC) that are not associated with former MGP operations were detected at elevated concentrations in one sub-slab soil vapor sample. In addition, PCE was detected at an elevated concentration in another sub-slab soil vapor sample. A number of non-MGP-related constituents detected in indoor air (2-butanone [methyl ethyl ketone], dichlorodifluoromethane (Freon 12), 4-methyl-2-pentanone [MIBK], and PCE) were above typical background indoor air concentrations in a number of indoor air quality samples.
- The vapor intrusion pathway for potential MGP-related constituents at the Site is determined to be incomplete. Potential MGP-related constituent vapors are not migrating into the shopping center building at concentrations that may result in an unacceptable human health risk. This is evidenced by the fact that potential MGP-related constituents detected in indoor air were below typical background indoor air concentrations for all indoor air quality samples. Furthermore, the potential MGP-related constituents detected in indoor air may be attributable to other sources (i.e., background sources).
- The hydrocarbon product identification data for soil samples suggest that fuel oil impacts of unknown origin are present at the water table across the entire area that the former MGP occupied and that coal tar impacts are present at the water table across the central and eastern portion of the area that the former MGP occupied.
- The former gas holders, tar tank, and cistern are all likely sources of the tar releases from the former MGP. Tar-impacted soils were observed in the glacial outwash deposits underlying the Site. The extent of tar-impacted soil has been horizontally and vertically delineated.
- The highest BTEX and PAH concentrations in soil generally correspond with the observed tar and petroleum impacts, which are a continuing source of groundwater impacts.
- Concentrations of BTEX constituents and light molecular weight PAH compounds in groundwater have migrated along the groundwater flow path (northwest) to the Block 7273, Lot 1 property boundary. However, the BTEX and light molecular weight PAH concentrations in groundwater significantly decrease between the former MGP operations area and the Block 7273, Lot 1 property boundary. These groundwater concentrations significantly decrease with both vertical and horizontal distance from the limits of tar-impacted soils.

- Soil, groundwater, soil vapor, and ambient air associated with the former MGP operations do not present potentially complete exposure pathways for commercial workers, consumers, or residents based on current land use and are not anticipated to represent complete future exposure pathways for these receptors. Construction and utility workers may be exposed to soil and/or shallow groundwater during intrusive activities, but the use of appropriate health and safety measures can be used to mitigate these exposures.
- Sufficient data have been obtained during the SC and RI to determine the extent of impacts from the former MGP operations. However, the majority of the SC and RI drilling locations were situated outside of the approximate former MGP site boundary due to the access limitations associated with the existing shopping center building, and therefore additional data may be required to support remedy design and implementation.

The IRM, which began in June 2017, includes the following planned activities:

- Excavation of five areas under a temporary fabric structure to remove soils and former underground structures from former MGP operations. Calcium sulfate (gypsum) injection to treat groundwater and less-contaminated soils in place (in-situ). This activity was completed in June 2017.

4.0 CITIZEN PARTICIPATION ACTIVITIES

This section presents the specific citizen participation and outreach activities planned for implementation during the remedial program and to be implemented in accordance with 6 NYCRR Part 375 and DER-23. Operating under project-specific citizen participation goals, clearly defined objectives will be achieved by implementing a range of communication tools and methods. The planned activities are geared toward making project-specific information (e.g., work plans, technical reports, information sheet summaries) available to the public; facilitating communication among stakeholders including the creation of contact lists; scheduling and conducting public meetings; establishing comment periods; and notifying the public of document availability, public meetings, comment periods and major program milestones.

National Grid and the NYSDEC have maintained a limited communications presence in the community near the site throughout the early phases of the project. These activities included briefings of local officials and other interested parties and the publication and distribution of Fact Sheets announcing the Site Characterization. A Fact Sheet has been prepared to announce the start of the Remedial Investigation.

In addition, NYSDEC has presented the RI findings, the Proposed Remedy, and the start of the IRM in public meetings, as announced in Fact Sheets distributed to the community in January 2015, October 2016, and June 2017, respectively.

4.1 Goals and Objectives

The central goal of this CPP is to achieve effective, open communication about the Remedial Design and remedial construction among stakeholders and interested parties, National Grid and the NYSDEC. Common goals include:

- Communicate program goals and major milestones, actions and outcomes;
- Inform citizens and others of ongoing project activities, status and progress;
- Provide citizens (and all stakeholders) a forum for input and comment; and
- Engender a public understanding of constituents of interest, their potential effects on human health and the environment, and appropriate responses to mitigate those effects.

In order to accomplish these goals, the following specific objectives will be pursued

through the implementation of this CPP:

- Consistently communicate goals, accomplishments and status of the project to the contact list (including community leaders, public officials and the wider community, as necessary) through appropriate means;
- Establish, maintain, update and utilize the contact lists;
- Educate the community, in lay terms, about the nature and magnitude of potential site risks, including instructions for mitigating risk (if appropriate) and assurances that the environment and worker/public health and safety are protected;
- Provide interested parties the opportunity to review and comment on technical reports generated through the remedial program (e.g., public comment periods and document repository as required by 6 NYCRR Part 375);
- Provide interested parties the opportunity to present opinions and ideas during the remedial program (e.g., conduct public meeting/comment period and availability session as required by 6 NYCRR Part 375);
- Provide the news media with interviews of National Grid authorized spokespersons, as available, as well as press releases and similar materials to ensure accurate coverage of remedial program activities;
- Provide a designated project spokesperson as point of contact through which community inquiries regarding the project can be addressed consistently and effectively; and
- Periodically review the effectiveness of the citizen participation and outreach activities during the remedial program and make adjustments in this CPP's methods and/or activities, if necessary.

The community contact list is provided in Appendix C and the former Dangman Park MGP Site Project Management contacts (NYSDEC, NYSDOH and National Grid representatives) are provided in Appendix D.

4.2 Tools and Methods

There are many ways to reach and communicate with the community and other interested parties as this CPP is implemented over the course of the remedial program. A variety of outreach tools and methods will be used to ensure proper communication with the interested parties that include various organizations, public and business leaders, and a diverse assemblage of individuals of all ages, education backgrounds and cultures.

Interested parties will be informed and invited to participate in the planned citizen participation activities through appropriate means such as mailings to the contact list, a legal notice in newspapers, press releases, notices posted on the site's website, information sheets and other documents made available in the document repository.

The following specific public participation activities will be implemented as required by 6 NYCRR Part 375 and current NYSDEC guidance (DER-23).

4.2.1 Document Repository

A Local Document Repository has been established at the offices of Brooklyn Community Board 13, which maintain in one file all of the relevant documents related to the Site. A Repository is also maintained at the NYSDEC offices in Albany, New York. Contact information for the Local Document Repository:

Brooklyn Community Board 13
1201 Surf Avenue
Brooklyn NY 11224
718 266 3001
Attn.: District Manager

The following documents are available in the Repository, or will be made available when completed and accepted by the NYSDEC:

- Citizen Participation Plan
- Site Characterization Data Summary and Site Characterization Data Summary Addendum
- Remedial Investigation Work Plans (including Supplemental Investigations)
- Final Remedial Investigation Report
- Pre-Design Investigation Work Plan

- Interim Remedial Measure Work Plan
- Feasibility Study
- Final Remedial Design Work Plan
- Remedial Action Work Plan
- Remedial Design
- Construction Completion Report
- Site Management Plan
- Other Materials (e.g., Information Sheets, Notices, etc.).

4.2.2 Public Meetings and Fact Sheets

Milestone Public Meetings will be scheduled by the NYSDEC and Fact Sheets announcing such meetings will be distributed to the site's mailing list. Pursuant to DER-23, a Public Meeting will be scheduled at the time of Proposed Remedial Action Plan. Fact Sheets will be produced and distributed to the Site's contact list at the time the NYSDEC issues a Record of Decision, before the start of Remedial Action (after the acceptance of the Remedial Design Report) and at the issuance of the Certificate of Completion. During construction National Gridwill prepare periodic updates summarizing construction progress via the project website with Fact Sheets or handouts as deemed necessary.

4.2.3 Information Newsletters/Handouts

Information newsletters will be prepared and distributed to the contact list in order to announce activities that may impact normal community activities or to announce major project milestones and accomplishments throughout the remedial program (e.g., start of construction, major report completion, etc.). Written in lay terms, information newsletters or handouts will describe and summarize current and planned work on the Site, particularly any which may impact routine community activities.

4.2.4 Telephone Hotline

National Grid has established a Telephone Hotline for neighbors of the Site. The phone number is (718) 982-7349. There will be occasional news updates about the investigation, and the Hotline can be used at any time to leave questions about the project.

4.2.5 Website

National Grid is establishing a website for the project at www.dangmanparkmgpsite.com. The website will include background information about manufactured gas plants, historical information about the Site, a description of work that has been completed during the project and contact information, including links to the NYSDEC's MGP website. The home page will contain a periodic update of activities related to the investigation and remediation of the Site. A Key Documents section will contain all of the major reports completed during the project, and an archive of Fact Sheets and weekly reports.

4.3 Roles and Responsibilities

The specific roles and associated responsibilities for implementing this CPP are:

- NYSDEC Remedial Project Manager - The NYSDEC Project Manager is responsible for enforcement, oversight and management of the overall remedial program. Typical citizen participation-related activities include making presentations at public meetings, reviewing project documents such as information sheets and providing technical assistance in preparing the responsiveness summary or answering public inquiries.
- NYSDEC Citizen Participation Specialist - The Citizen Participation Specialist assists the project manager in implementing the CPP. Typical activities include preparation and/or review of information sheets and the responsiveness summary and coordination of public meetings and availability sessions.
- National Grid Project Manager - The National Grid Project Manager, in cooperation with the NYSDEC Project Manager, is responsible for implementing the overall remedial program at the site. Typical citizen participation-related activities include management of CPP implementation, presentations at public meetings and technical assistance to the NYSDEC Project Manager and Citizen Participation Specialist.

4.4 Schedule for Implementing Elements of the CPP

Implementing elements of this CPP will depend upon completion by National Grid and final approval by the NYSDEC of various plans and reports required by the Order on Consent governing the Site.

5.0 SUMMARY

Guided by the goals and objectives of this CPP, implementation of the planned public outreach and citizen participation activities will ensure the timely communication of important program information of interest to the local community. Citizen involvement and interaction in the remedial program will be facilitated through specific opportunities such as public meetings, public comment periods, availability sessions and use of the Site's website and the Document Repository. Throughout the remedial program, this CPP and its specific outreach tools and methods will be monitored and, as required and agreed by the NYSDEC and National Grid will be adjusted to improve its effectiveness in responding to community needs.

Appendix A

GLOSSARY OF KEY CITIZEN PARTICIPATION TERMS AND MAJOR PROGRAM ELEMENTS

Citizen Participation Plan (CPP) - A document that describes the project-specific citizen participation and outreach activities that will take place alongside the technical components of the remedial program. The CPP also provides project information, citizen participation goals and objectives, and lists of contact persons and document repositories.

Citizen Participation Specialist - An NYSDEC staff member whose duty it is to provide guidance and assistance in carrying out the CPP. The Citizen Participation Specialist is the key contact for public inquiries about the project and the remedial activities.

Contact List - A list in the CPP (Appendix C) containing names and addresses of individuals, groups, organizations, news media and public representatives interested and/or affected by the project. The contact list is used to distribute important information and notices about the project and the remedial program.

Document Repository - Project documents and other information are placed in the Document Repository to facilitate convenient public access to these materials. Documents are available for public reference and review at the offices of Community Board 13. Refer to Appendix B for more information about the Document Repository location.

Feasibility Study (FS) - Based on information gathered during the Remedial Investigation (RI), the FS is a process for developing, evaluating and selecting appropriate Remedial Action (RAs) for limiting or eliminating the potential human and environmental hazards of a site. The FS sets out the goals of the remedial actions to be taken, evaluates the most appropriate alternatives and selects the best alternative based on several criteria. The selected remedy is then recommended for implementation in the Proposed Remedial Action Plan (PRAP), which is subject to public review and comment.

Interim Remedial Measure (IRM) - An IRM is a discrete set of planned actions for both emergency and non-emergency situations that can be conducted without the extensive investigation and evaluation of a Feasibility Study (FS). An IRM covers a variety of activities, large and small, to remediate an array of diverse, well-defined problems at a site. An IRM is extremely adaptable, and can be part of or the full remediation of a site.

Polycyclic Aromatic Hydrocarbons (PAHs) - Contaminants typically found at MGP sites and associated with coal tar residues.

Remedial Design (RD) - This report will include a detailed description of the remedial objectives and the means by which each essential element of the selected remedial alternative will be implemented to achieve those objectives. It incorporates the findings of the FS Report to provide a remedial design which will be implemented during the performance of the cleanup activities at the site.

Remedial Investigation (RI) - A process to determine the nature and extent of contamination at a site by analyzing data collected from sampling (e.g., water, soil, air, etc.) at a site. Information gathered throughout the RI is then used to conduct a Feasibility Study (FS), which proposes and evaluates various remedial alternatives for the site.

Responsiveness Summary - The Responsiveness Summary is prepared by the NYSDEC to address public comments, questions and concerns regarding the proposed remedial action (PRAP) to be taken at a site. The Responsiveness Summary is issued as part of the Remedial Action Program.

Volatile Aromatic Hydrocarbons - Benzene, Toluene, Ethylbenzene, Xylene (BTEX) - Volatile aromatic hydrocarbons and are typical contaminants found at MGP sites and other sites where coal, oil, refined products and other hydrocarbons were burned or used.

Appendix B

IDENTIFICATION OF DOCUMENT REPOSITORIES

Brooklyn Community Board 13
1201 Surf Avenue, 3rd Floor
Brooklyn NY 11224
718 266 3001
Attn.: Eddie Mark -- Call for Appointment

NYSDEC
Division of Environmental Remediation
625 Broadway
Albany, NY 12233-7014
(518) 402-9662
Call for Appointment and Hours

Appendix C

IDENTIFICATION OF AFFECTED AND/OR INTERESTED PARTIES

Site Owners:

532 Neptune Associates, LLC
c/o Apartment Management Associates,
LLC
2611 West 2nd St,
Brooklyn, NY 11223

Trump Village Construction Corporation
Sheepshead Bay Road
Brooklyn, NY 11224
(718) 266-0500

Government Officials and Elected Officials

Name, address, phone e-mail

Hon. Bill de Blasio
NYC Mayor

City Hall
New York, NY 10007

Hon. Scott Stringer
NYC Comptroller

1 Centre Street
New York, NY 10007

Hon. Letitia James
Public Advocate

1 Centre Street
New York, NY 10007

Hon. Kirsten Gillibrand
U.S. Senator

780 Third Avenue, Suite 2361
New York, NY 10007

Hon. Charles Schumer
U.S. Senator

780 Third Avenue, Suite 2301
Brooklyn, NY 11224

Carl Weisbrod
Commissioner
NYC Dept. of City Planning

22 Reade Street
New York, NY 10007

Vincent Sapienza
Acting Commissioner, NYC Dept. of
Environmental Protection

59-17 Junction Boulevard
Flushing, NY 10007

Nilda Mesa
Director
NYC Office of Environmental
Coordination

100 Gold Street, 2nd Floor
New York, NY 10038

John Wuthenow
Office of Environmental Assessment &
Planning
NYC Dept. of Environmental
Protection

96-05 Horace Harding Expy
Flushing, NY 11373

Nancy T. Sunshine
Kings County Clerk

360 Adams Street, Room 189
Brooklyn, NY 11201

Joann Weiss, Chair Brooklyn
Community Board 13

1201 Surf Avenue, 3rd Floor
Brooklyn, NY 11224

Environmental Committee Chair
Brooklyn Community Board 13

1201 Surf Avenue, 3rd Floor
Brooklyn, NY 11224

Mark McIntyre
NYC Office of Environmental
Remediation

100 Gold Street – 2nd Floor
New York, NY 10038

Michael Silver
Commissioner
NYC Dept. of Parks & Recreation

830 Fifth Avenue
New York, NY 10065

Brooklyn Borough President Eric
Adams

Brooklyn Borough Hall
209 Joralemon Street
Brooklyn, New York 11201
TEL: (718) 802-3700

NYS Assemblyman Pamela
Harris

2823 West 12th Street Suite 1F
Brooklyn, NY 11224
TEL: (718)266-0267

City Councilman Chaim Deutsch

2401 Avenue U
Brooklyn, NY 11229
TEL: (718)368-9176

US Representative Hakeem Jeffries

55 Hanson Place
Suite 603
Brooklyn, NY 11217
TEL: 718-237-2211

NYS Senator Diane Savino

36 Richmond Terrace
Suite 112
Staten Island, NY 10301
TEL: (718) 727-9406

Community Groups, Schools, Daycare Centers

Community Board	Brooklyn Community Board 13 Eddie Mark, District Manager 1201 Surf Avenue Brooklyn NY 11224 718 266 3001
Andrew Hoan, President & CEO	Brooklyn Chamber of Commerce 25 Elm Place, Suite 200 2nd FL Brooklyn, NY 11201
Warbasse Nursery School	2785 W. 5th Street #1 Brooklyn, NY 11224
Teremonk 5 Day Care Suite 23Z	448 Neptune Avenue Brooklyn, NY 11224
St. Paul's Lutheran Church	623 Sheepshead Bay Road Brooklyn, NY 11224
Public School 100	2951 W. 3rd Street Brooklyn, NY 11224
Public School 370 Luna Park Housing Corporation	3000 W. 1st Street Brooklyn, NY 11224
William Taylor Commanding Officer 60th Precinct NYPD	2879 West 12 th Street Brooklyn, NY 11224
Brooklyn Queens Land Trust	2951 W. 8th Street Brooklyn, NY 11224
Guardian Angel Roman Catholic Church	677 Lafayette Avenue Brooklyn, NY 11216
Of Luna Park Congregation	2978 Ocean Parkway Brooklyn, NY 11235
Sea Breeze Jewish Center	2900 West 8th Street Brooklyn, NY 11224

Temple Beth Abraham	301 Sea Breeze Avenue, Brooklyn, NY 11224
Warbasse Cares for Seniors	2844 Ocean Parkway Brooklyn, NY 11235
Sea Gate Association	3700 Surf Avenue Brooklyn, NY 11224
Coney Island Chamber of Commerce	1015 Surf Avenue Brooklyn, NY 11224
Coney Island Development Corporation C/o NYCEDC	110 William Street New York, NY 10038
GC Tilyou Junior High School Principal	501 West Avenue Brooklyn, NY 11224
Edna Cohen Public School 90	2840 West 12th Street Brooklyn, NY 11224
1 Rachel Carson High School for Coastal Studies	521 West Avenue Brooklyn, NY 11224
I.S. 303	501 West Avenue Brooklyn, NY 11224
Abraham Lincoln High School	2800 Ocean Parkway Brooklyn, NY 11235

Community Newspapers

<u>Newspaper Name</u>	<u>Editor's Name</u>	<u>Address, Phone #, E-mail</u>
The Brooklyn Paper Publications	Vince DiMiceli	1 (718) 260-2500 editorial@cnglocal.com
The Brooklyn Daily Eagle & Daily Bulletin	Dozier Hasty	1 (718) 422-7400 ext. 410 publisher@brooklyneagle.net
Brooklyn Downtown	(ONLINE)	
Star New York Daily News		4 New York Plaza New York, NY 10004
New York Post		1211 Avenue of the Americas New York, NY 10036
New York		235 Pinelawn Road Melville, NY 11747
Newsday NY 1 News		75 Ninth Avenue New York, NY 10011
News 12 Brooklyn		East 18 th Street & Avenue Z Brooklyn, NY 11235
Courier-Life		1 Metro-tech Center North 10th FL Brooklyn, NY 11201
Publications Brooklyn		30 Henry Street Brooklyn, NY 11201
Daily Eagle		2966 Avenue U, Suite 108 Brooklyn, NY 11229
Bay Currents		

Appendix D

IDENTIFICATION OF PROJECT MANAGEMENT CONTACTS

New York State Department of Environmental Conservation

William Wu
Project Manager
NYSDEC Division of Environmental Remediation
625 Broadway
Albany, NY 12233-7014
Tel: (518) 402-9662

Thomas V. Panzone
Regional Citizen Participation Specialist
Office of Communications Services
NYSDEC Region 2
47-40 21st Street
Long Island City, NY 11101
Tel: (718) 482-4953

New York State Department of Health

Albert DeMarco
NYSDOH
Bureau of Environmental
Exposure Investigation
Empire State Plaza
Corning Tower, Room 1787
Albany, NY 12237
(518) 402-7860, or
1-(800) 458-1158
Email: BEEI@health.ny.gov

National Grid Public Representative

April Dubison
Community Relations
National Grid
Fleet Services Administration Building
287 Maspeth Ave
Brooklyn, NY 11211

Dangman Park MGP Project Hotline Telephone – (718) 982-7349.

Please leave a message on the Hotline and your call will be promptly returned.